

Creating a new Broadband Connection Windows Vista

What you need before you start

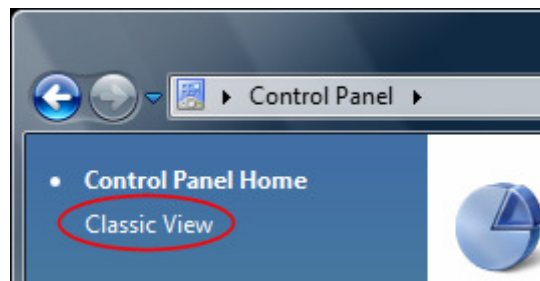
- Your Sundance Wireless High-Speed **username** and **password**.

Follow these easy steps

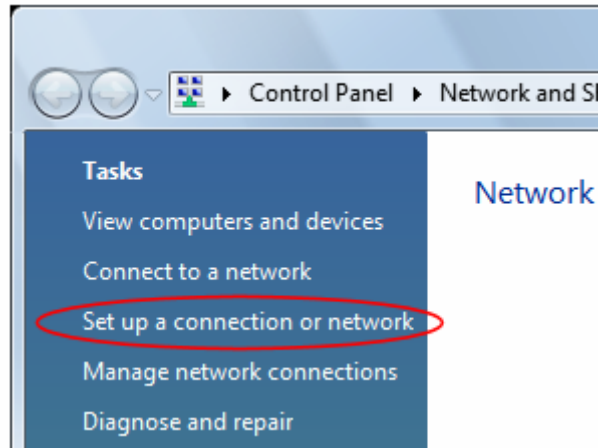
1. Click on **Start**.
2. Access the **Control Panel**

... via Start Menu View	... via Classic View
1. Click on Start, then select the Control Panel	1. Click on Start - Settings - Control Panel

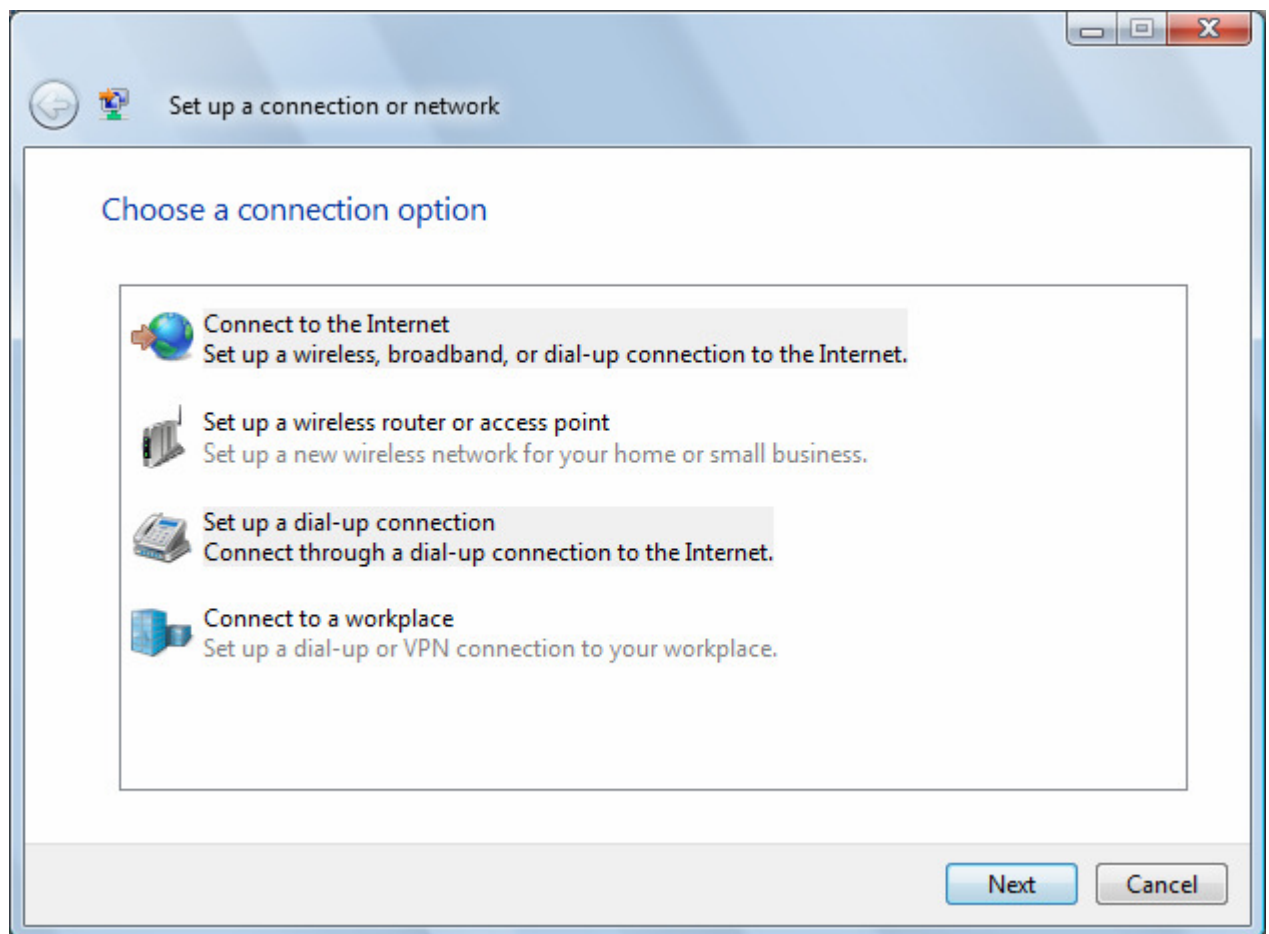
3. Once the control panel is open click the **Classic View** selection on the left side of the screen.



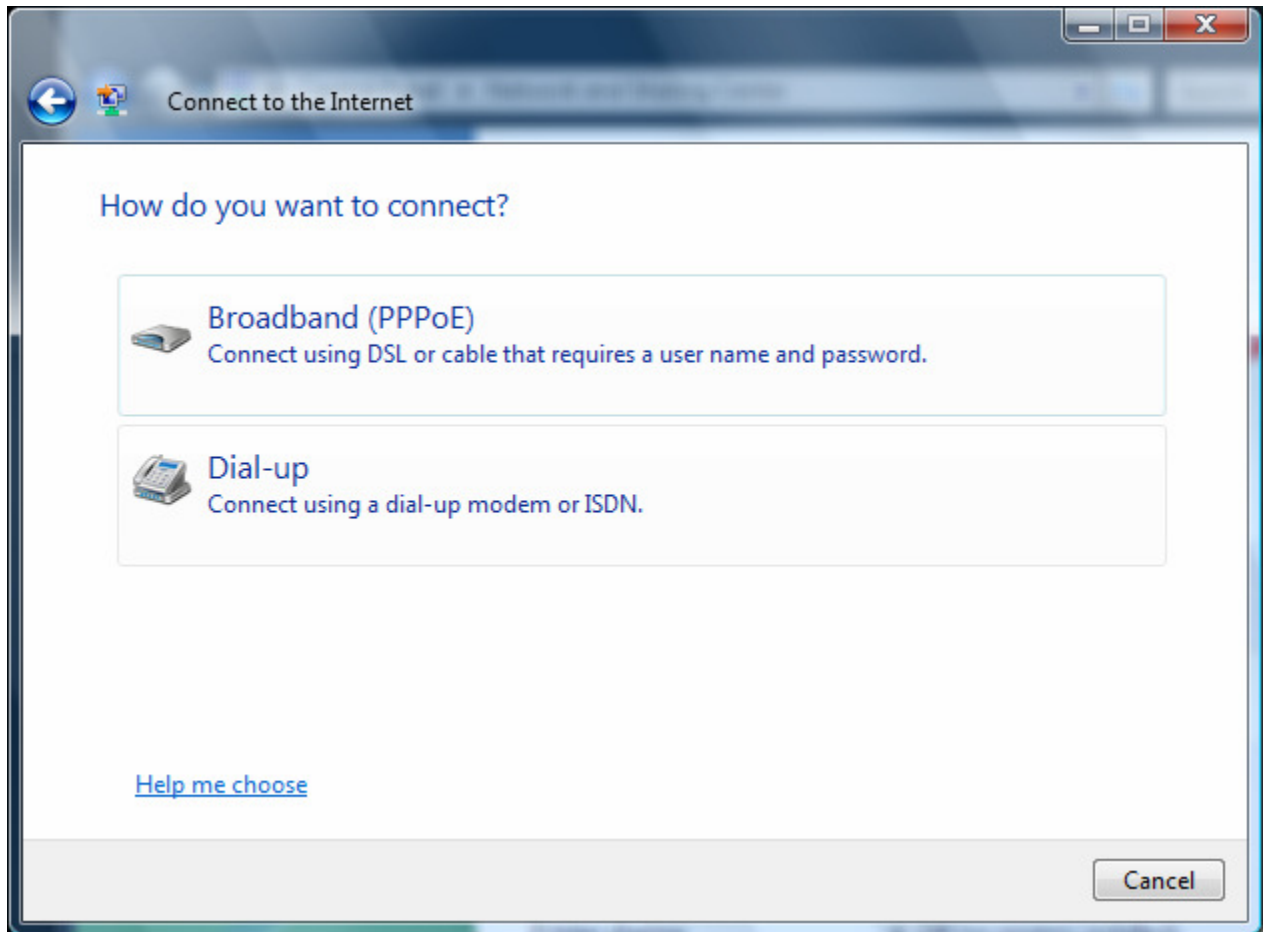
4. Locate and double click on the **Network and Sharing Center** icon
5. Click on the **Set up a connection or Network** link



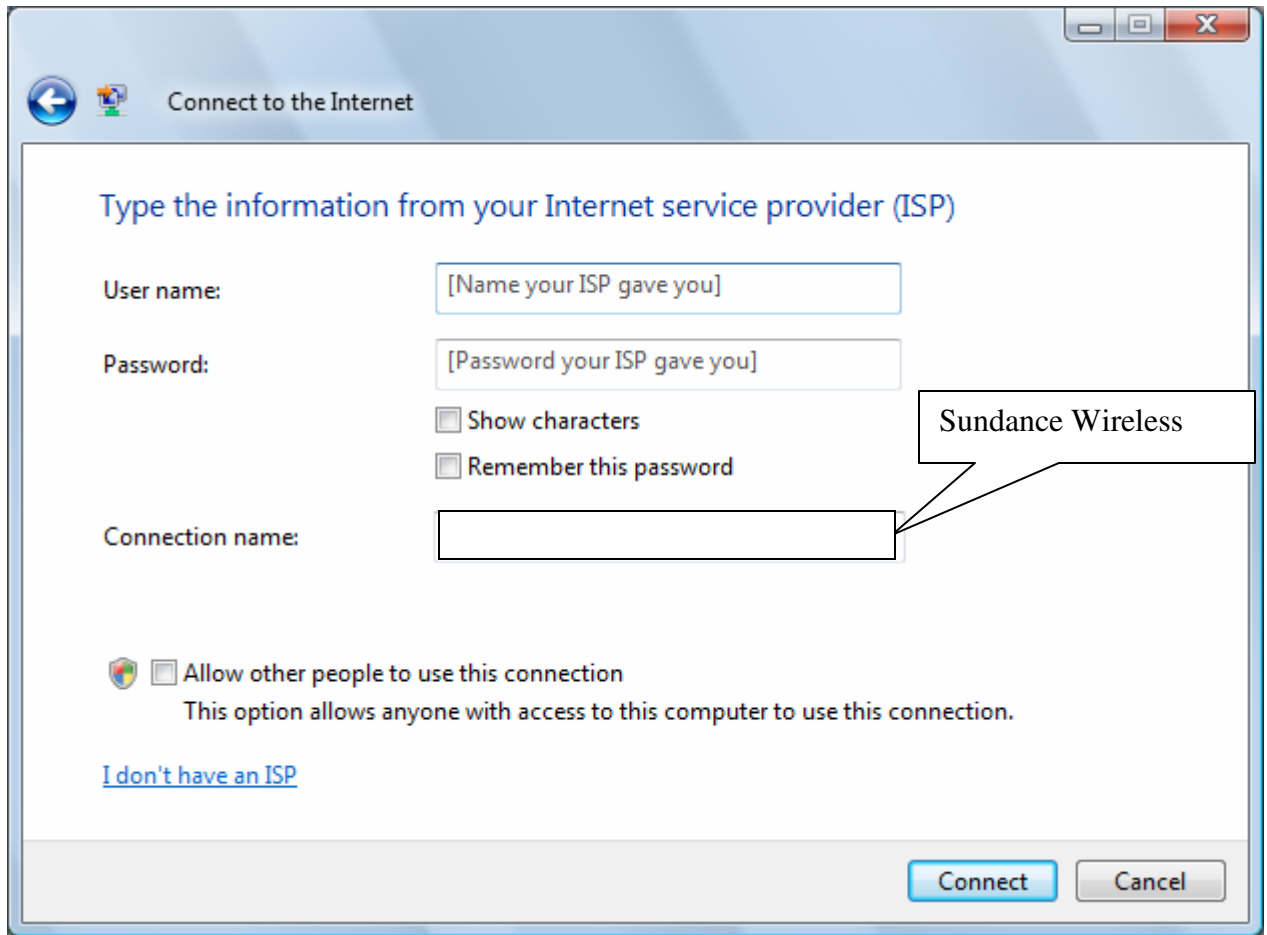
6. Select **Connect to the Internet**, then click on **Next**.



7. Select **Broadband (PPPoE)**, then click on **Next**



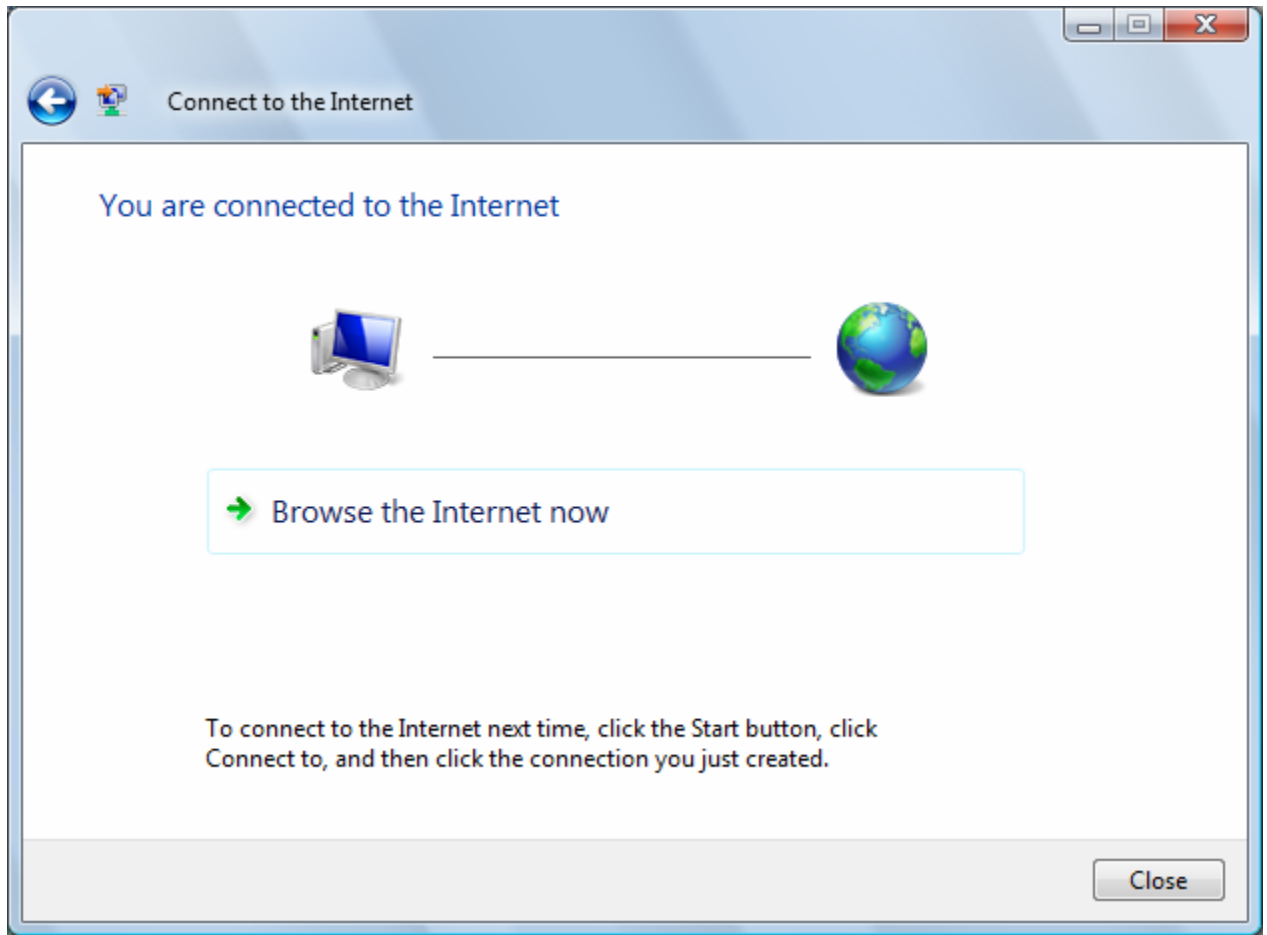
8. In this window enter in the following;
 - a. In the **User name** field, type your Sundance user name.
 - b. In the **Password** field, type the password for the Sundance user name you specified.
 - c. In the **Connection name** field, type in a name to identify your connection. This should be Sundance Wireless.



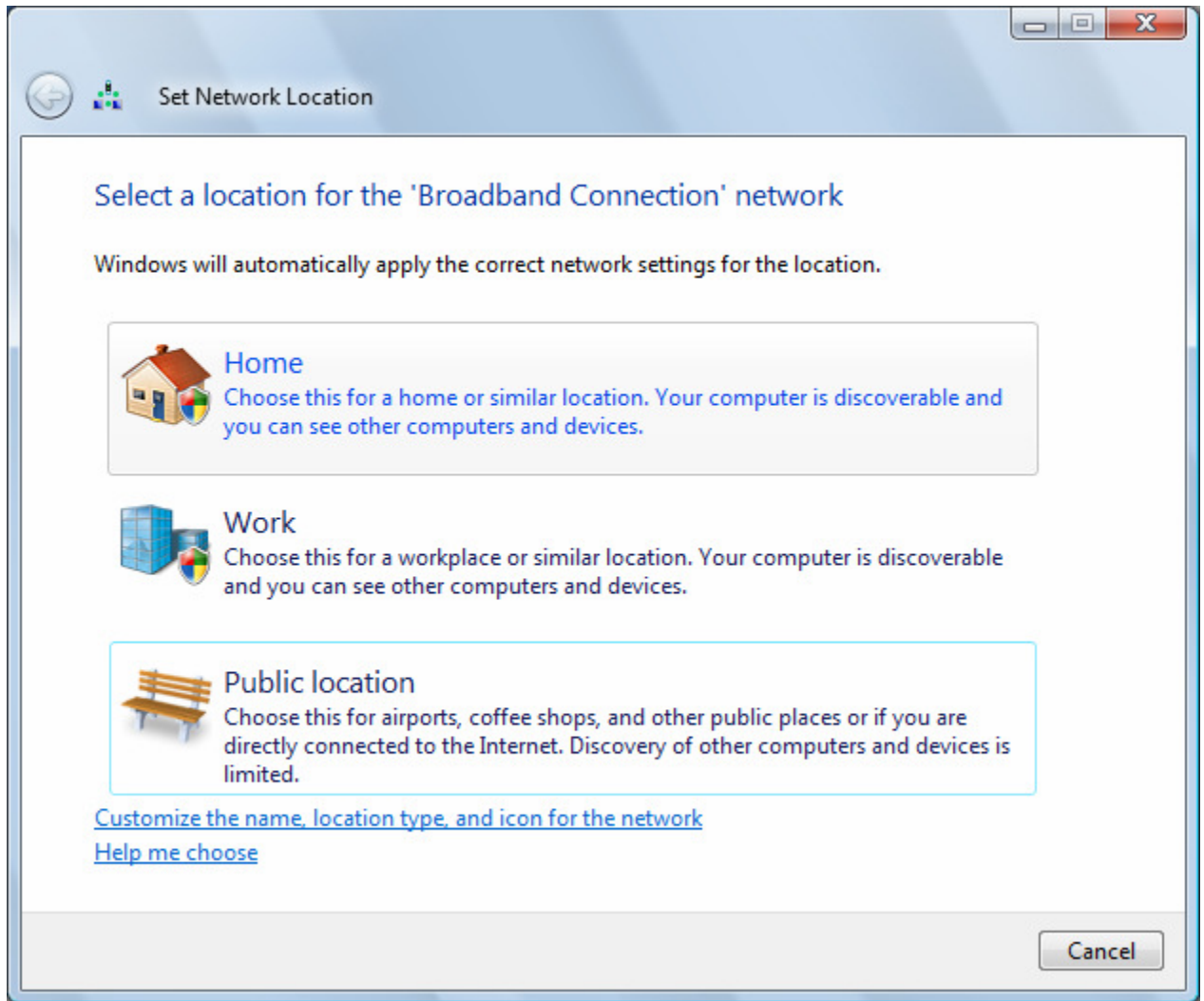
9. If you get this window, you have successfully connected to the Internet. Click on **Close**

If this window did not appear either (1) the username or password was entered in wrong, or (2) there is something wrong with the connection to the Internet.

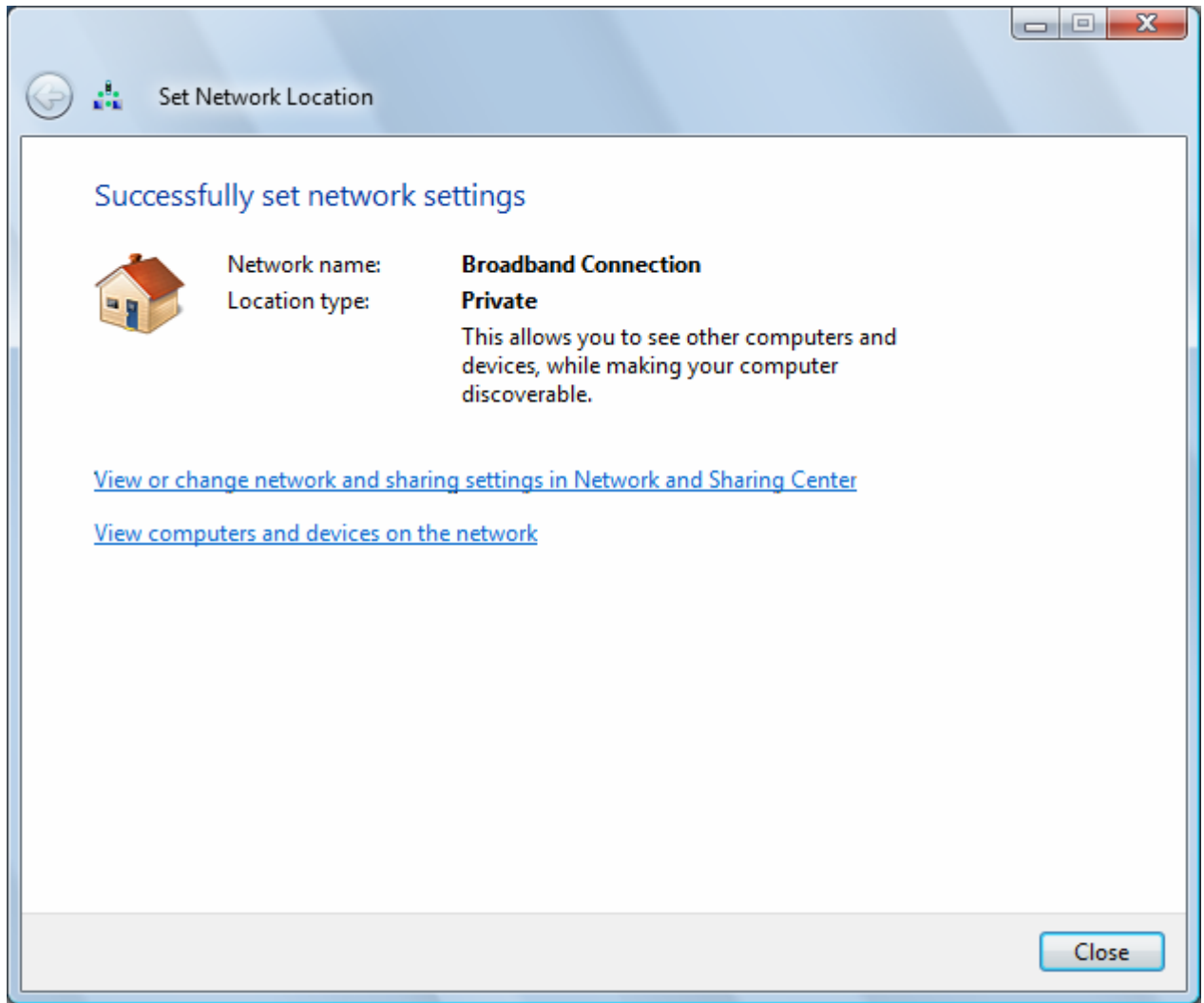
For more help, give us a call at **307-267-3764** mike or **Jeff** at **307-267-6052**.



10. Click on **Home** - a Security window may appear, click to continue.



11. Click **Close**



12. Click on **Close**.

